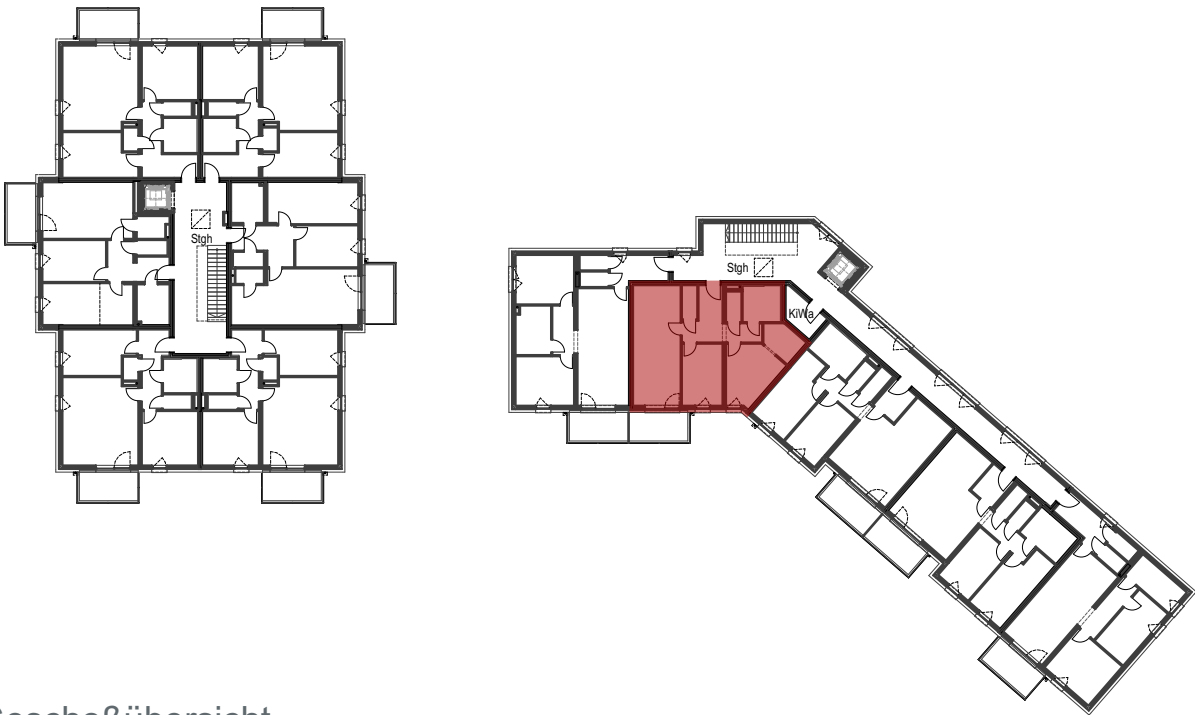
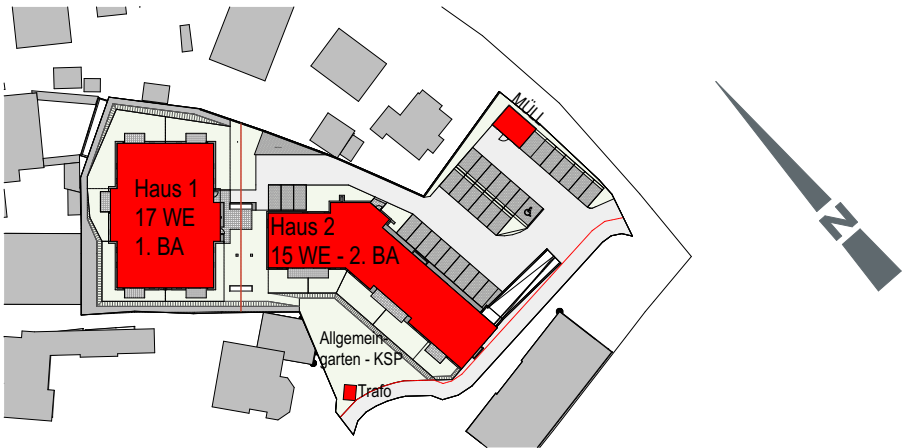


# Neubau Wohnanlage Attnang-Puchheim

2. Bauabschnitt - Rudolfsweg 1, 4800 Attnang-Puchheim



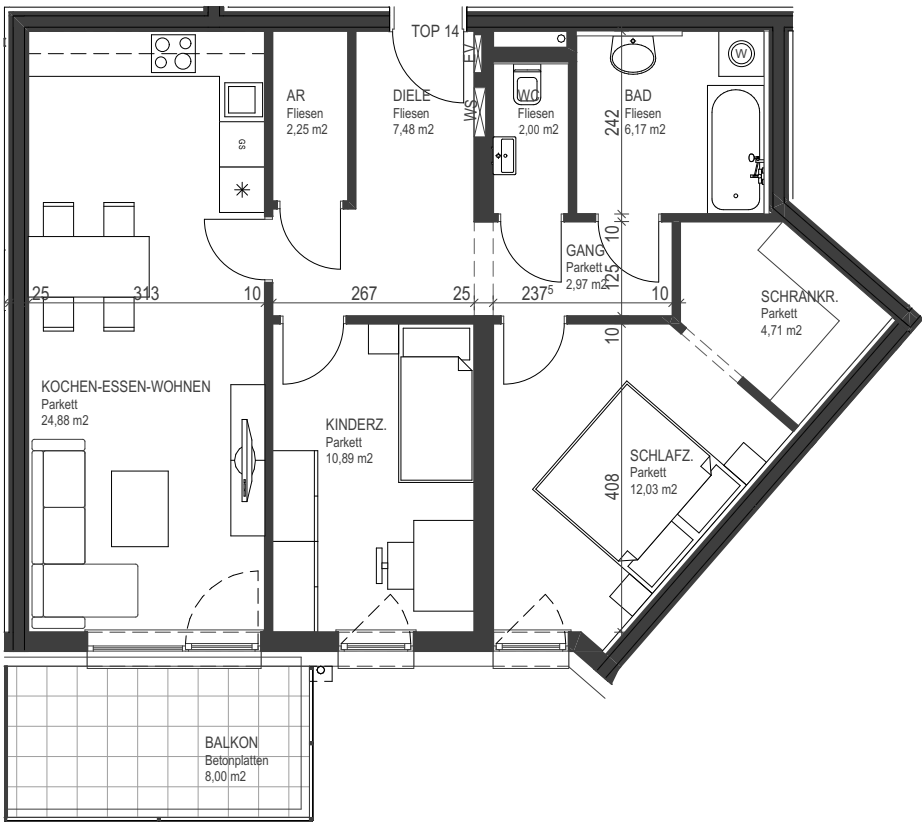
Geschoßübersicht



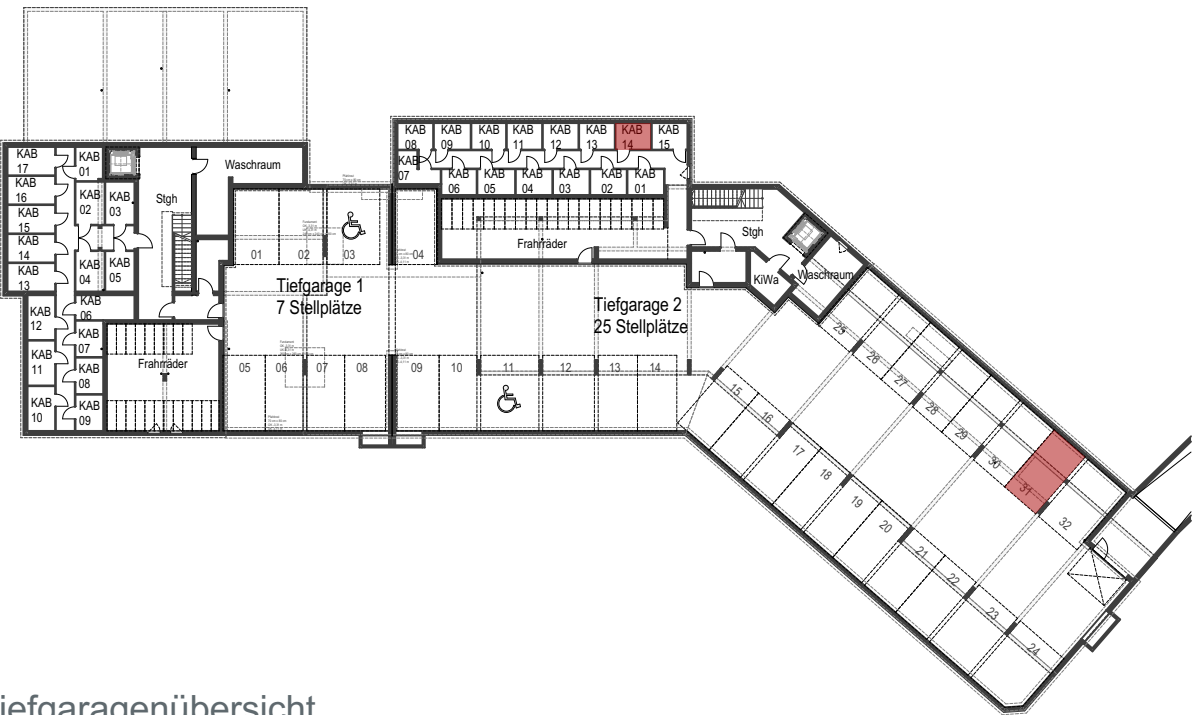
## TOP 14

Haus 2 - 3 Zimmer

2. Obergeschoß



TOP 14 - 3 Zi	Haus 2
Wohnräume	73,38 m <sup>2</sup>
	<b>73,38 m<sup>2</sup></b>
Balkon	8,00 m <sup>2</sup>
Keller	4,12 m <sup>2</sup>



Tiefgaragenübersicht